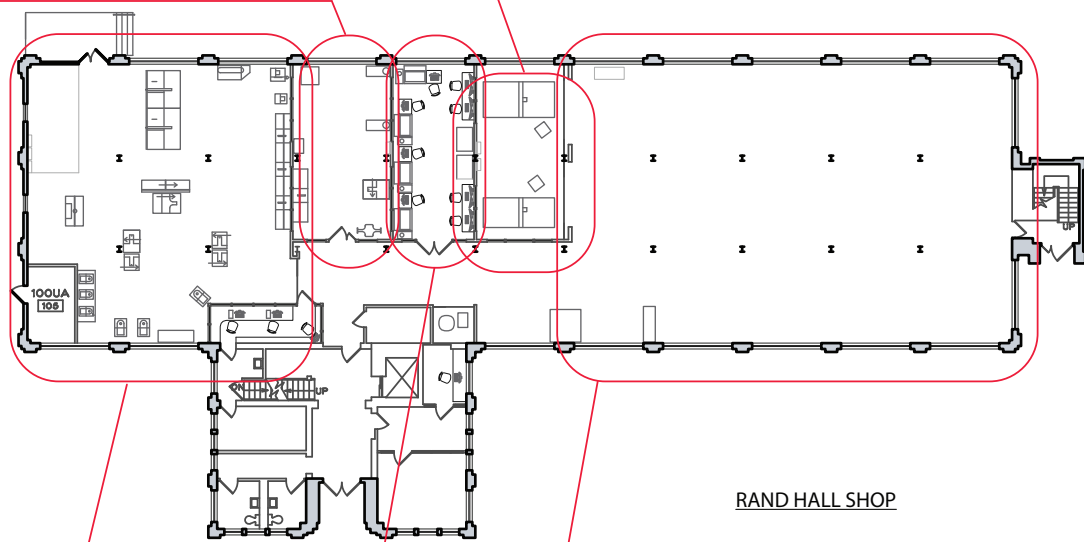
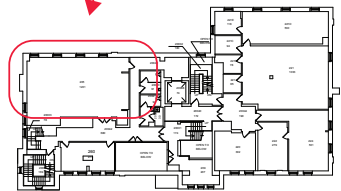


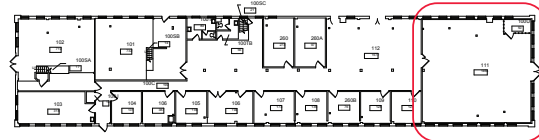
SCULPTURE CLASSROOM



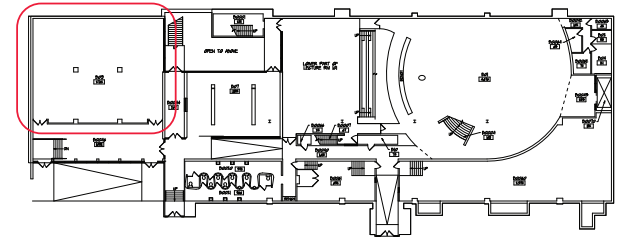
RAND HALL SHOP



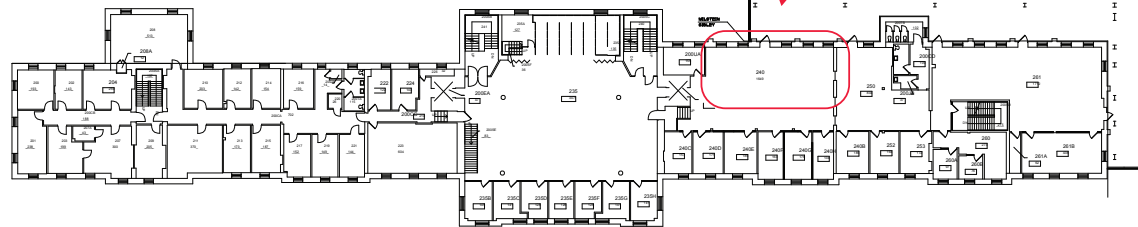
TJADEN HALL



FOUNDRY



MILSTEIN



SIBLEY HALL

Sculpture moves to Tjaden 205.

CNC machines move to Foundry Kiln Shed.

Metal working moves behind the Foundry.

Wood shop moves to the Foundry.

Rand Annex moves to Milstein basement.

Digital Fabrication moves to the 2nd floor of Sibley.